

# TEX-FAN

## Flow Simulation Software for TEX

### 1. Outline

We developed the program “TEX-FAN” (Flow Analysis Network) by FAN method for quick and easy analysis of pressure and temperature distribution, filling level, residence time, and melting profile in axial polymer flow of twin screw extruder. It is quite effective in shortening the duration of material development or trial production and in rationalization of the process to achieve the required product quality.

This simulation software uses the screw configuration database of another self-developed software “TEX-GEO” which can manage screw configurations of TEX in your production lines or laboratories. “TEX-FAN” allows anyone to easily run a simulation by entering required data such as polymer properties and operation conditions of extruder.

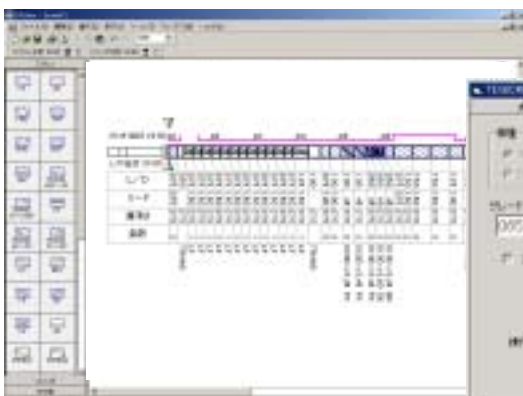


Fig.1 Display to edit screw configuration



Fig.2 Display to enter analysis conditions

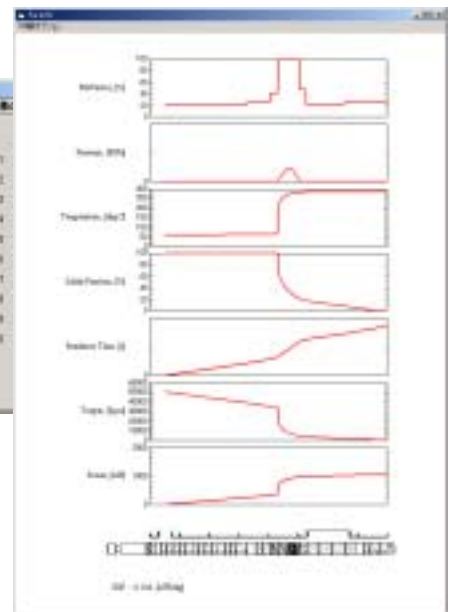


Fig.3 Simulation result

### 2. Hardware requirement

- CPU : Pentium500MHz or more (Windows 2000)  
Pentium800MHz or more (Windows XP)
- Memory : 128M or more
- Hard disk : Free area more than 20M
- Display : High-resolution monitor above SVGA
- Disk unit : CD-ROM drive
- Others : Keyboard, mouse or other pointing device

### 3. Afterward

We are fairly confident that this simulation software is quite helpful to improve efficiency in your process or new material development with easier theoretical analysis and shorter development period.

For more information ; **THE JAPAN STEEL WORKS, LTD.**

**Sales Dept./Tokyo**      Hibiya Mitsui Bldg., 1-2, Yurakucho 1-chome, Chiyoda-ku, Tokyo, Japan 100-8456  
**Phone : +81-3-3501-6134    Fax : +81-3-3595-4621**

**Hiroshima Plant**      6-1, Funakoshi-minami 1-chome, Aki-ku, Hiroshima-city, Japan 736-8602  
**Plastics Machinery Dept.**  
**Phone : +81-82-822-5515    Fax : +81-82-824-1512**

**Home page address : <http://www.jsw.co.jp/>**